



Arabian International Company

Estructuras Metalicas
Structural Steel



Building Partnership



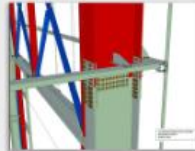
JINDAL SAW LTD.
RHPipe

RHPipe / Jindal Saw Ltd.

Cañerías
Steel Pipe



Total Pipe Solution



Structural Steel (Heavy, Medium
& Light) for:

- Power Houses
- Boiler Structures
- Industrial Buildings
- Pipe Racks
- Multi-storey buildings
- Material Handling Systems



- LSAW & HSAW Pipes
- Seamless Tubes and Pipes
- OCTG Casing & Tubing to API 5 CT in Grade J, K, L & P
- DI Pipes
- Connector Casing
- Anti - Corrosion Coatings (3 LPE, FBE, CTE, Polypropylene)



Jindal Steel & Power Limited

Acero Carbono
Carbon Steel



Taking India Ahead



Arabian International Company

Torres & Galvanizado
Towers & Galvanizing Division



Building Partnership



- Semi Finished Products (Square billets and blooms, Beam Blanks, Slabs)
- Beams / Columns / Channels
- Rails
- Plate & Coils
- Fabricated Sections
- Wired Rods
- TMT Bars
- Medium & light Structural Mil



- Power Transmission Towers (upto 500KV)
- Telecommunication towers
- Gantry Structures
- Cross arms and pole accessories.



Enprotech

Tratamiento de agua, lodos,
aire & efluentes
Water treatment, sludge,
air & effluent



Strong in Water Technology



Indiana Group

Graiting, escalerillas eléctricas
& pasamanos
Graiting, Cable Tray & Hand rails



- Pretreatment
- Physico - Chemical
- Biomembrane
- Aerobic
- Anaerobic
- Anaerobic treatment with cogeneration
- Sludge treatment
- Odour Treatment
- Service, maintenance and Operation
- Know-how



- Graittings
- Stair Treads
- Graiting clips
- Handrails
- Cable trays
- FRP Graittings
- FRP Cable Trays



Empresa Satvia

Plataformas de perforación vertical
Vertical drilling Rigs



Your innovative partner



Alzamil Heavy Industries Ltd

Estanques
Steel Tanks



**Visions & Innovations....
Beyond the Boundaries of norm**



Extreme conditions: Heat and dust in the desert of Libya and Kazakhstan



Test of our Workover Rig type TB 1800



- Pressure Vessels
- Reactors
- Storage tanks
- Oil Fired Heaters
- Steam generating Plants
- Incinerators
- Heat Exchangers



Q.CELLS




Q.Cells

Células Fotovoltaicas
Photo voltaic cells



Solar cells
Solar Modules
Solar systems



Energía ^{com}Tec



**Adding Value and Knowledge
to the Energy**



Stand **Steel SW**, Sr. Pradeed K. Kapur, Embajador de la **India**; Geert Roggeman CEO **Steel SW**; Madan Mohanka, Chairman & MD **Tega**



**Adding Value and Knowledge
to the Bussiness**

www.steel-sw.com

Business areas:

- o Structural Steel
- o Pipe
- o Steel
- o Equipments
- o Tanks
- o Energy
- o Eng. & Constr.





Steel SW would allow access to global market-leading companies that provide different alternatives of products and services with the highest standards, reliability, ethics, competitive prices and attractive delivery times. Our knowledge of the market and the human capital will allow us to understand closely the customer requirements and needs for the proper development of the project.

The management team of Steel SW has over 20 years experience in which provides a solid commitment to all our customers, also provided a high level contact in the Latin America market

Come and join us to see potential business, we are open for your ideas.

Other business in the portfolio is:

Stainless Steel
Galvanize Steel
Cranes
Erection

www.steel-sw.com
email: steel@steel-sw.com
Phone +56 9 8 502 6946



**Adding Value and Knowledge
to the Business**

www.steel-sw.com

Steel SW is a company whose mission is to provide technical and commercial support to various industry in their investment of capital and operations

Business area:

- Structural Steel
- Pipe
- Steel
- Equipments
- Tanks
- Energy
- Eng. & Constr.